

# Be Thou My Vision

Score

## SLANE

for Bb trumpets 1 & 2 with piano accompaniment  
approximate perf. time: 2:00

Andante (♩ = 88)

Arr. Brian Childers, ASCAP

Trumpet in B♭ 1

Trumpet in B♭ 2

Andante (♩ = 88)

*mf*

B♭ Tpt. 1

B♭ Tpt. 2

4

4

4

*f*

*mp*

Classy  
Sheet  
Music

8

B $\flat$  Tpt. 1

*mp*

B $\flat$  Tpt. 2

8

12

B $\flat$  Tpt. 1

B $\flat$  Tpt. 2

*mp*

12

16

B $\flat$  Tpt. 1

B $\flat$  Tpt. 2

16

20

B $\flat$  Tpt. 1

B $\flat$  Tpt. 2

20

Classy Sheet Music

*tranquillo*

*mf*

8va

24

B $\flat$  Tpt. 1

B $\flat$  Tpt. 2

24

28

B $\flat$  Tpt. 1

B $\flat$  Tpt. 2

28

With speed and fervor (♩ = c. 108)

B♭ Tpt. 1

B♭ Tpt. 2

*f*

*f*

32

*rit*

With speed and fervor (♩ = c. 108)

B♭ Tpt. 1

B♭ Tpt. 2

36

Classy Sheet Music

40

B $\flat$  Tpt. 1

B $\flat$  Tpt. 2

43

*rit.*

B $\flat$  Tpt. 1

B $\flat$  Tpt. 2

*ff*

*mf*

Andante ( $\text{♩} = 88$ )

*rit.*

*ff*

*mf*

Andante ( $\text{♩} = 88$ )

*gva*-----

46

B $\flat$  Tpt. 1

B $\flat$  Tpt. 2

*mp*

50

*rit.*

B $\flat$  Tpt. 1

B $\flat$  Tpt. 2

*p*

50

*rit.*

*p*

*p*

Classy Sheet Music

# Be Thou My Vision

Trumpet in B $\flat$  1

## SLANE

for B $\flat$  trumpets 1 & 2 with piano accompaniment  
approximate perf. time: 2:00

Arr. Brian Childers, ASCAP

Andante ( $\text{♩} = 88$ )

7 *mp*

11 4

18 3 4/4

24 2 4/4 2 3/4

30 With speed and fervor ( $\text{♩} = \text{c. } 108$ ) *f*

36

40 *rit.*



Andante (♩ = 88)

44 *ff* *mf*

48 *mp* *p* *rit.*

51

return to [classysheetmusic.com](http://classysheetmusic.com) to purchase

**PREVIEW**



Classy  
Sheet  
Music

Trumpet in B $\flat$  2

# Be Thou My Vision

SLANE

for B $\flat$  trumpets 1 & 2 with piano accompaniment  
approximate perf. time: 2:00

Andante ( $\text{♩} = 88$ )

Arr. Brian Childers, ASCAP

11 *mp*

15 4

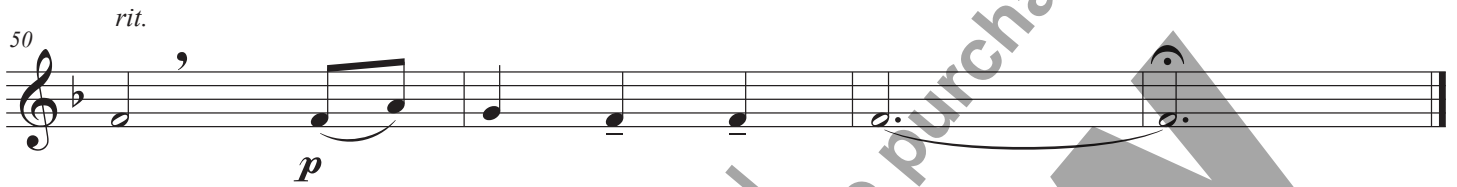
22 4 2

27 4 3 *f*

34

38

42 *rit.* *ff* *mf* Andante ( $\text{♩} = 88$ )



return to [classysheetmusic.com](http://classysheetmusic.com) to purchase

**PREVIEW**

